





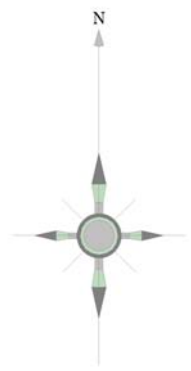
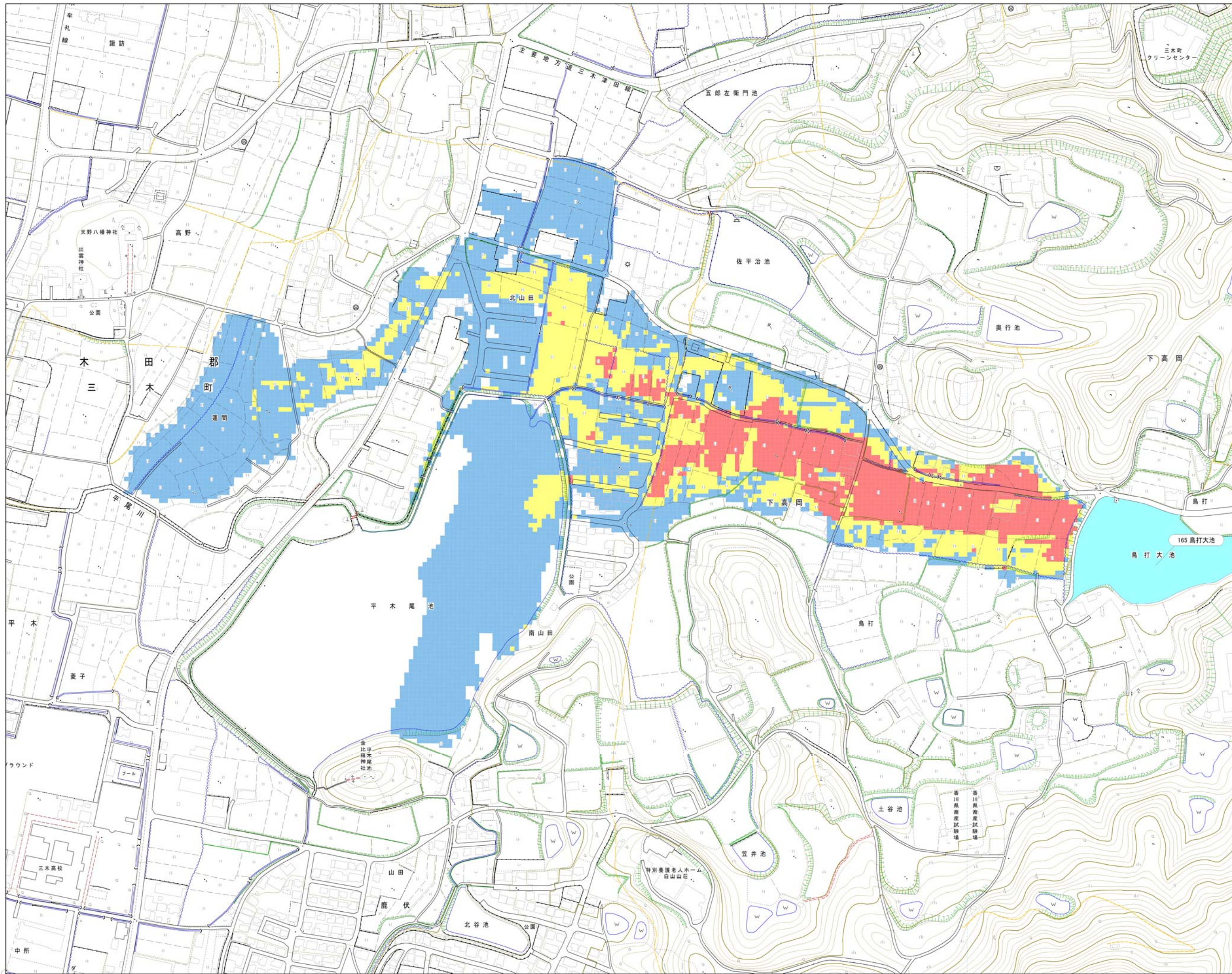


三木町  
 浸水想定区域図  
 【最大浸水深】  
 鳥打大池

最大浸水深	
	0.5m未満
	0.5~1.0m未満
	1.0~2.0m未満
	2.0~3.0m未満
	3.0~5.0m未満
	5.0m以上

1:4,000



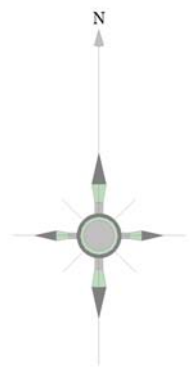
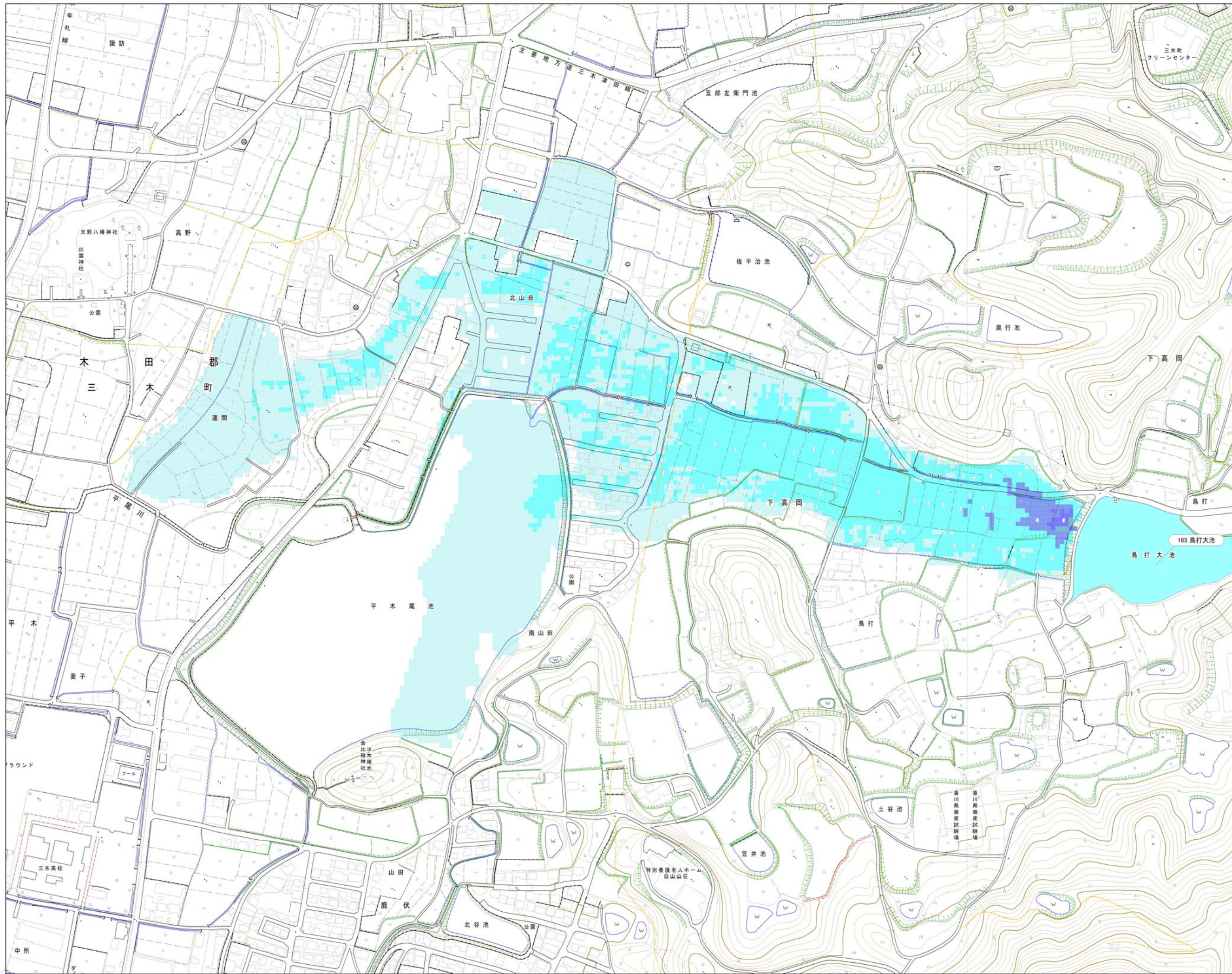


三木町  
 浸水想定区域図  
 【歩行困難度】  
 鳥打大池

最大歩行困難	
<span style="display:inline-block; width:15px; height:15px; background-color:blue;"></span>	可能
<span style="display:inline-block; width:15px; height:15px; background-color:yellow;"></span>	困難
<span style="display:inline-block; width:15px; height:15px; background-color:red;"></span>	不可能

1:4,000



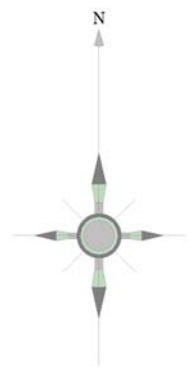
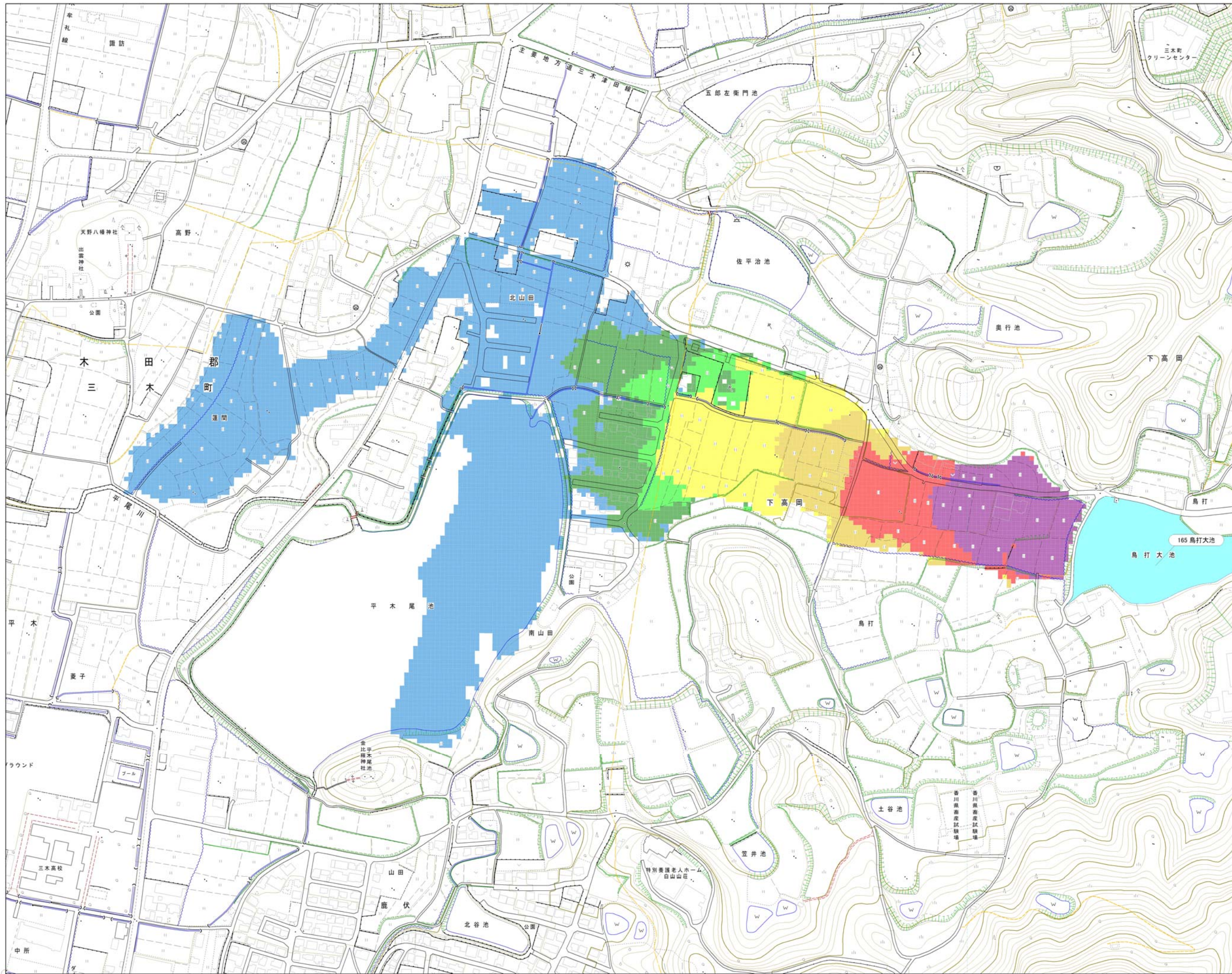


三木町  
 浸水想定区域図  
 【最大流速】  
 鳥打大池








最大流速	
	0.00m/s~
	1.00m/s~
	3.00m/s~
	5.00m/s~
	9.00m/s~
	12.00m/s~

1:4,000





三木町  
 浸水想定区域図  
 【洪水到達時間】  
 鳥打大池

洪水到達時間	
	0分～
	1分～
	2分～
	3分～
	5分～
	6分～
	8分～

1:4,000

