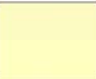
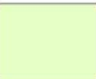




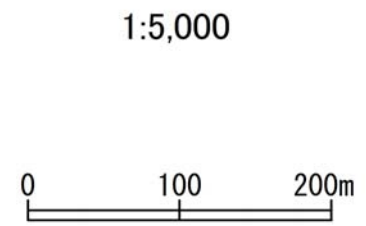
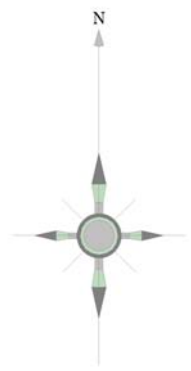
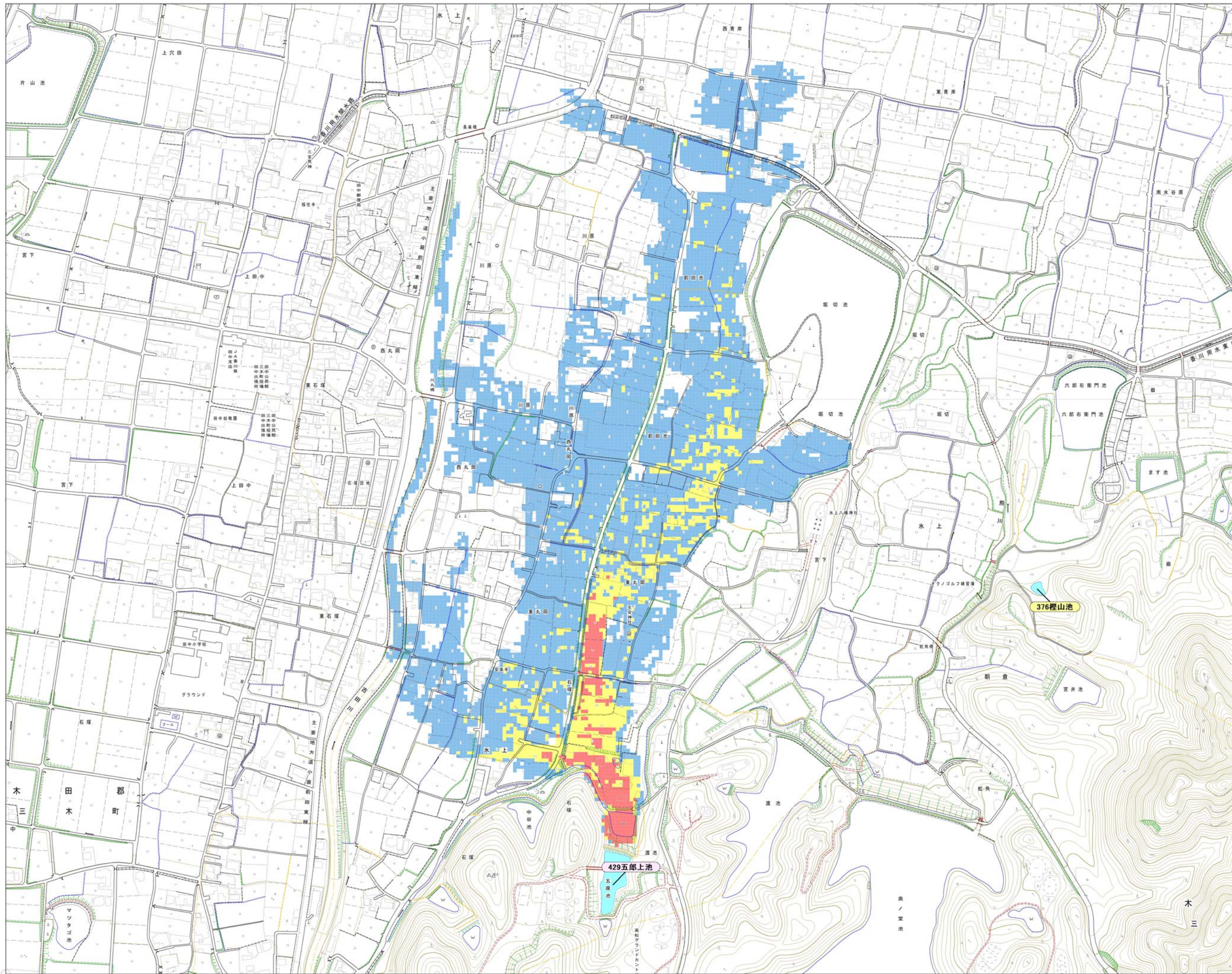


三木町
 浸水想定区域図
 【最大浸水深】
 五郎上池

最大浸水深	
	0.5m未満
	0.5~1.0m未満
	1.0~2.0m未満
	2.0~3.0m未満
	3.0~5.0m未満
	5.0m以上

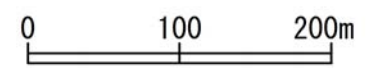


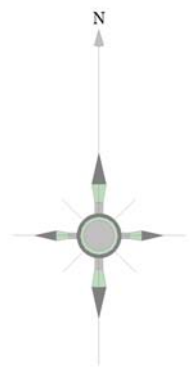
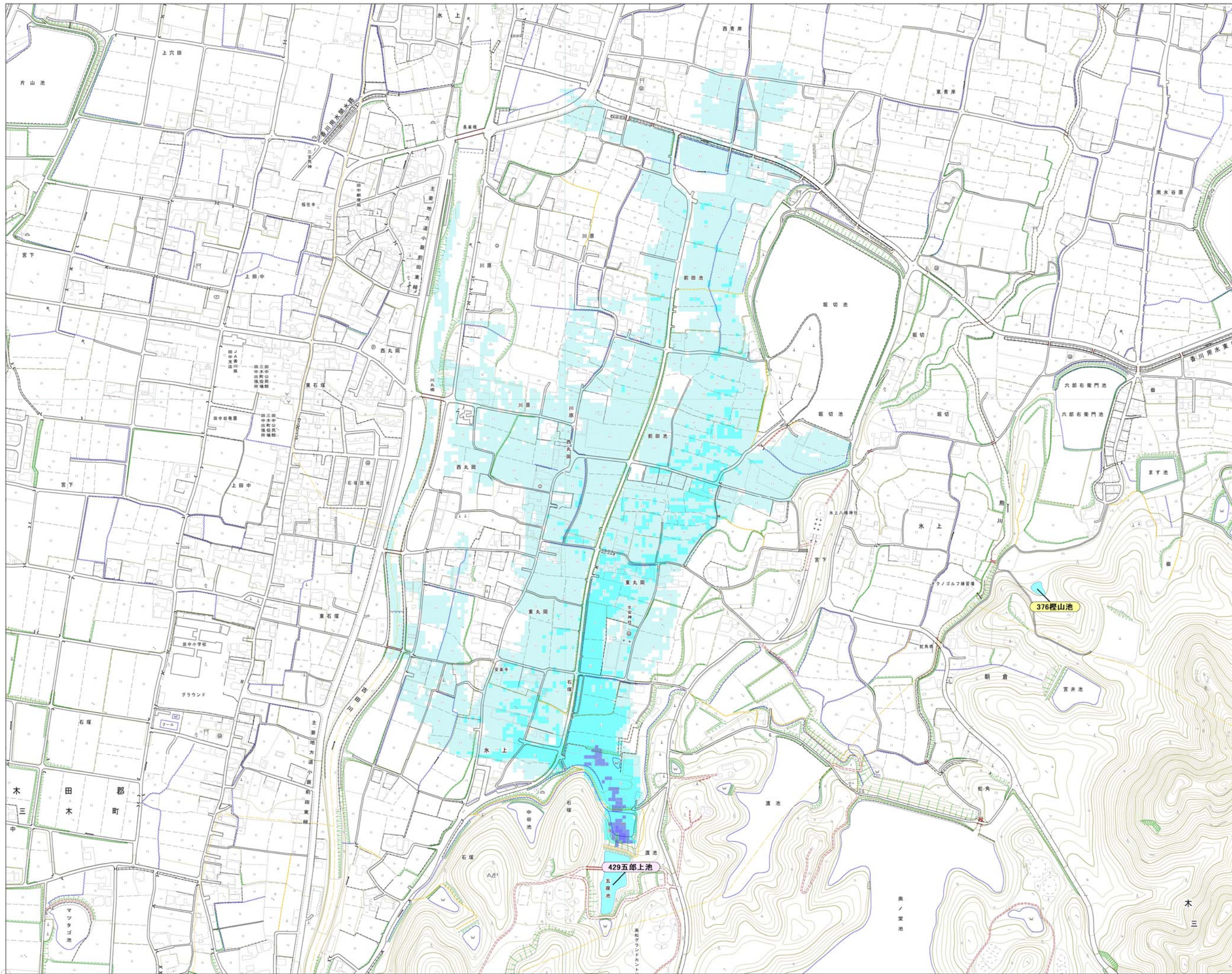


三木町
 浸水想定区域図
 【歩行困難度】
 五郎上池

最大歩行困難	
	可能
	困難
	不可能

1:5,000

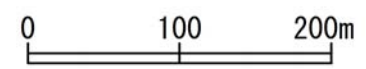


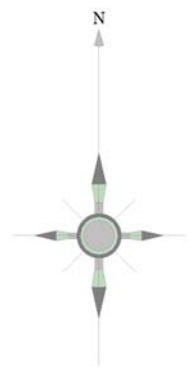
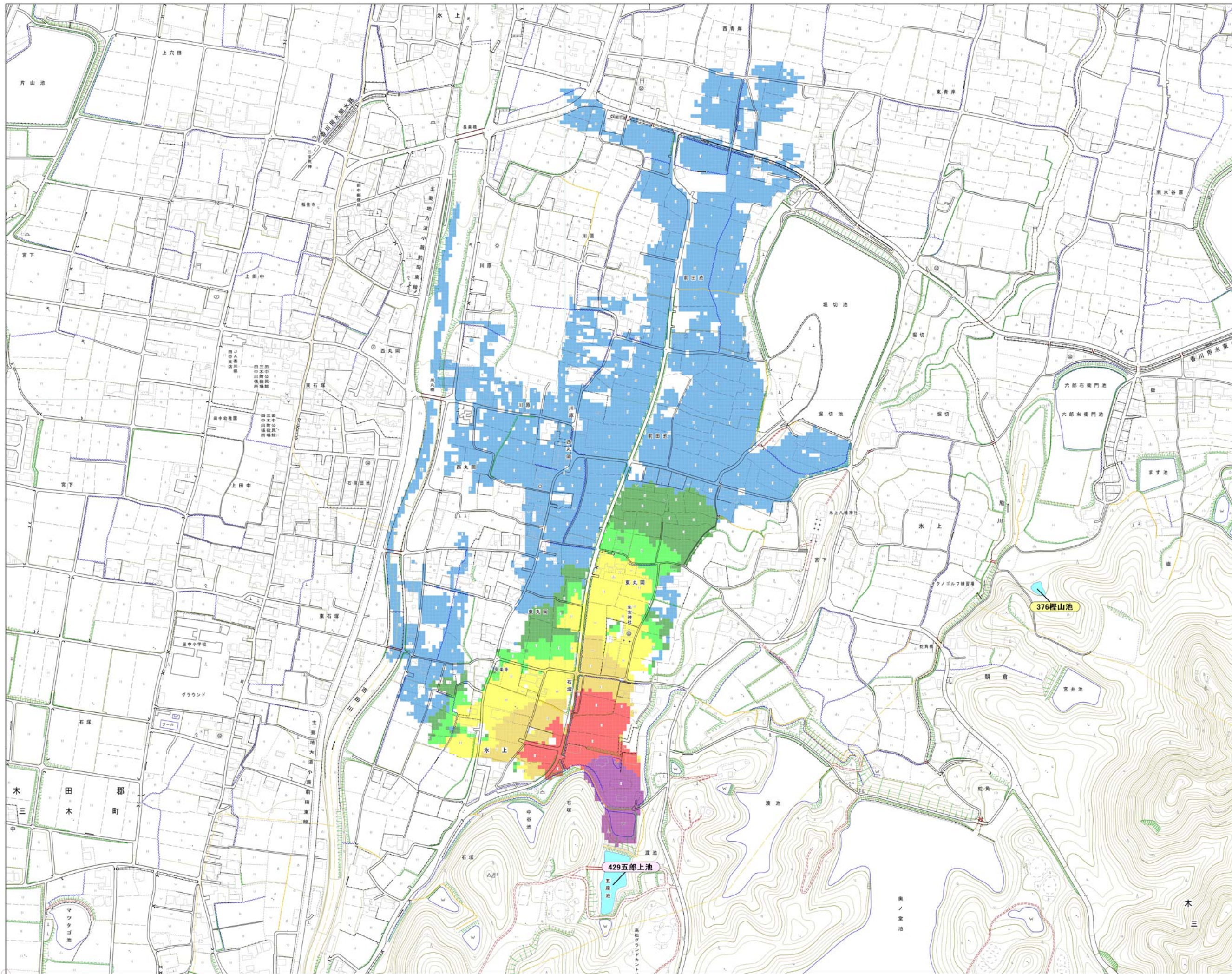


三木町
 浸水想定区域図
 【最大流速】
 五郎上池

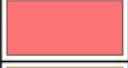



最大流速	
	0.00m/s～
	1.00m/s～
	3.00m/s～
	5.00m/s～
	9.00m/s～
	12.00m/s～

1:5,000





三木町
 浸水想定区域図
 【洪水到達時間】
 五郎上池

洪水到達時間	
	0分～
	1分～
	2分～
	3分～
	5分～
	6分～
	8分～

1:5,000

